



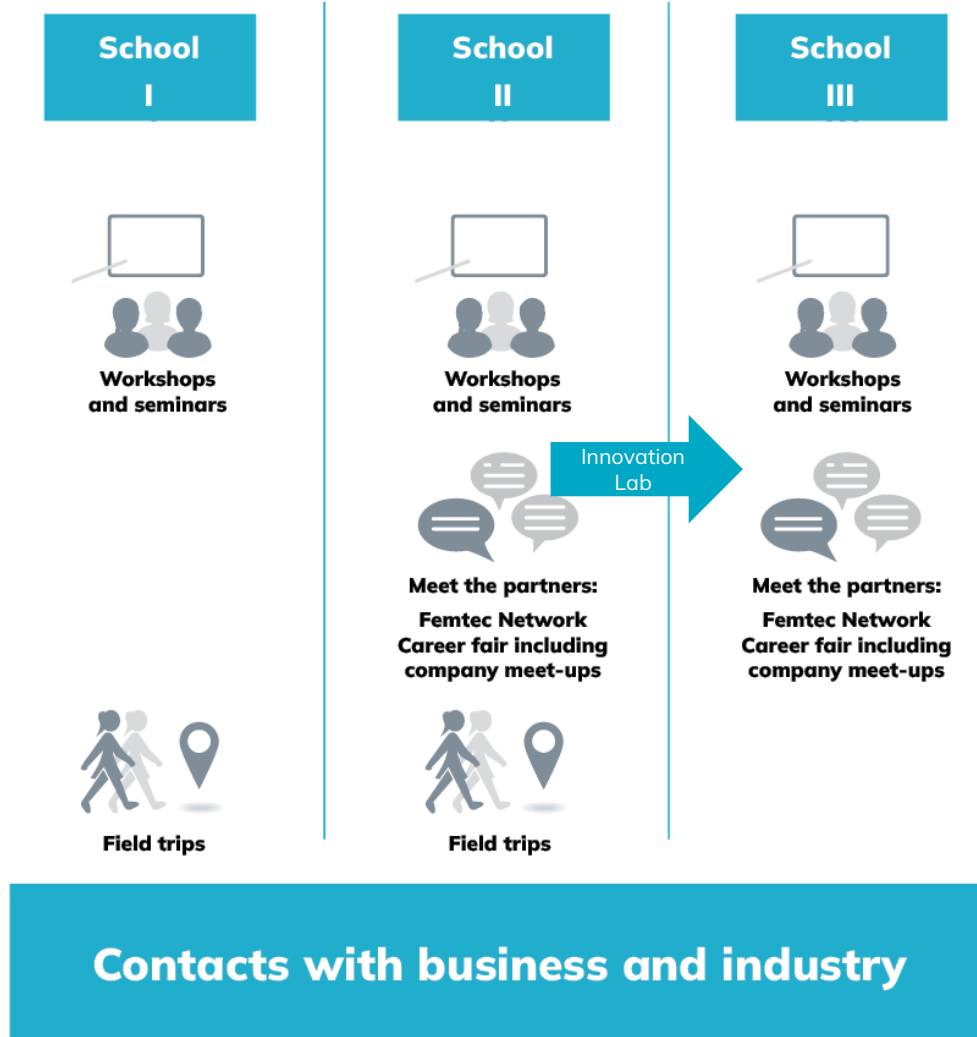
# CAREER-BUILDING PROGRAMME



**JOIN NOW!**

- **Do you sometimes feel alone as a woman in your subject?**
- **You don't know what to do after you graduated?**
- **Would you like to have more contact with female role models?**

# The Career-Building Programme consists of three Schools



# What's in for you?

## LIFELONG NETWORK

We connect you with other STEM-enthusiastic women, top-class companies, and coaches.

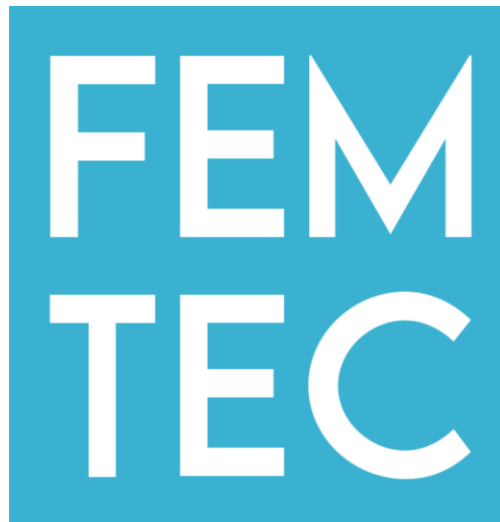
## SAFE SPACE

In the male-dominated fields, we are your safe space and support system.

## EMPOWER. CONNECT. INSPIRE.

## CAREER SPRINGBOARD

We allow you to make personal contacts and facilitate orientation, entry and your start into a fulfilling career!



## EXCLUSIVE INSIGHTS

Our partner companies give you valuable insights into their organizations.

## PERSONAL GROWTH

Let's identify your potential, strengths and goals, and promote resilience and tolerance of ambiguity!

## AGENT OF CHANGE

Together we drive transformation forward!

# Our eight partner universities.



# The partners of the Career-Building Programme.

## ENERGY

**e-on**

— **EnBW**

## INDUSTRIAL TECHNOLOGY

**DANAHER**

**ABB**

## R&D

**Fraunhofer**

**amazon**

**P&G**

## CONSUMER GOODS

**DAIMLER  
TRUCK**

**PORSCHE**

## AUTOMOTIVE

**ZF**

## CHEMISTRY

**EVONIK**  
Leading Beyond Chemistry

## TELECOMMUNICATIONS

**T . . .**

**BCG**

## CONSULTING

# More Information?



- **Online Info Event**  
October 26th, 2023,  
from 6 p.m. to 7 p.m.

## **Contact:**

- **Laura Bolotin**  
**femtec@tu-dresden.de**

# Application deadline

05th of  
November,  
2023



**APPLY NOW!**

